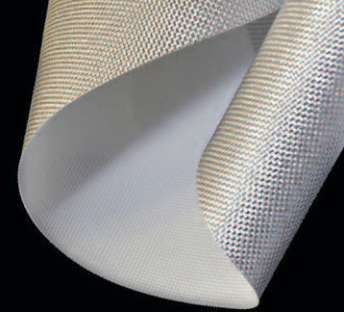


SheerWeave®

PERFORMANCE +

Metallized Fabric

STYLE 2390/2410



Complete Technical Data

■ SheerWeave Performance + takes the performance of a traditional SheerWeave fabric “plus” the highly reflective properties of metallization and combines them to achieve the ultimate in sun control protection. Available in all 10 Style 2390 colors, SheerWeave Performance + is currently offered in 5% open (Style 2390) and 3% open (Style 2410).

Benefits of Performance + include:

- Significant reduction of Solar Heat Gain in all colors
- Improved glare reduction in light colors
- Improved thermal performance
- Improved outward visibility in light colors



P12 Oyster



P13 Oyster/Beige



P14 Oyster/Pearl Gray



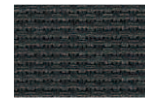
Q20 Beige



Q21 Beige/ Pearl Gray



V20 Pearl Gray



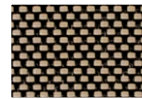
V21 Charcoal



V22 Charcoal/Gray



V24 Charcoal/Chestnut



V32 Charcoal/Alpaca

SOLAR HEAT CONTROL PROPERTIES SHEERWEAVE STYLE 2390 PERFORMANCE+ FABRIC							
	Solar Trans	Solar Ref Out	Light Trans	Light Ref	% Open	UV Trans	Color Rend Index
P12 Oyster	8	71	8	70	5	7	99
P13 Oyster/Beige	8	72	8	71	5	6	99
P14 Oyster/Pearl Gray	7	71	7	70	5	6	100
Q20 Beige	8	72	8	71	5	7	98
Q21 Beige/Pearl Gray	7	71	7	70	5	6	99
V20 Pearl Gray	7	74	7	73	5	6	99
V21 Charcoal	8	71	8	70	5	7	100
V22 Charcoal/Gray	8	71	8	70	5	7	100
V24 Charcoal/Chestnut	8	71	8	70	5	7	100
V32 Charcoal/Alpaca	8	74	8	73	5	7	100

SOLAR HEAT CONTROL PROPERTIES SHEERWEAVE STYLE 2410 PERFORMANCE+ FABRIC							
	Solar Trans	Solar Ref Out	Light Trans	Light Ref	% Open	UV Trans	Color Rend Index
P12 Oyster	5	73	5	72	3	3	99
P13 Oyster/Beige	5	73	5	72	3	4	99
P14 Oyster/Pearl Gray	4	73	4	72	3	4	99
Q20 Beige	5	73	5	72	3	4	98
Q21 Beige/Pearl Gray	5	72	5	71	3	4	99
V20 Pearl Gray	4	75	4	74	3	4	99
V21 Charcoal	4	71	4	70	3	4	100
V22 Charcoal/Gray	4	72	4	71	3	4	100
V24 Charcoal/Chestnut	4	72	4	71	3	4	100
V32 Charcoal/Alpaca	4	75	4	74	3	4	99

SOLAR HEAT CONTROL PROPERTIES SHEERWEAVE STYLE 2390 PERFORMANCE +												
	High Performance Glass				Low-E Glass				6mm Double Clear Glass			
	Light Trans	g-Value/SHGC	SC	U-value in W/m2K	Light Trans	g-Value/SHGC	SC	U-value in W/m2K	Light Trans	g-Value/SHGC	SC	U-value in W/m2K
Glazing Performance	69	39	45	1.1	74	70	80	1.4	79	74	85	2.8
P12 Oyster	6	15	18	0.8	7	30	35	1.0	7	24	28	2.5
P13 Oyster/Beige	6	15	17	0.8	6	30	34	1.0	7	24	28	1.6
P14 Oyster/Pearl Gray	5	15	18	0.8	6	30	35	1.0	6	25	29	1.6
Q20 Beige	6	15	18	0.8	6	30	35	1.0	7	25	29	1.6
Q21 Beige/Pearl Gray	5	15	18	0.8	6	30	35	1.0	6	25	29	1.6
V20 Pearl Gray	5	15	17	0.8	5	29	33	0.9	6	24	27	1.5
V21 Charcoal	6	16	18	0.8	6	31	35	1.0	7	25	29	1.6
V22 Charcoal/Gray	6	16	18	0.8	6	30	35	1.0	7	25	29	1.6
V24 Charcoal/Chestnut	6	16	18	0.8	6	30	35	1.0	7	25	29	1.6
V32 Charcoal/Alpaca	6	15	17	0.8	6	24	28	1.0	7	24	28	1.6
	6mm Single Bronze Glass				6mm Single Clear Glass				3mm Single Clear Glass			
	Light Trans	g-Value/SHGC	SC	U-value in W/m2K	Light Trans	g-Value/SHGC	SC	U-value in W/m2K	Light Trans	g-Value/SHGC	SC	U-value in W/m2K
Glazing Performance	49	58	67	5.7	88	84	96	5.7	90	87	100	5.8
P12 Oyster	4	20	23	2.5	8	22	26	2.5	8	22	26	2.5
P13 Oyster/Beige	4	19	22	2.4	7	22	25	2.4	7	22	25	2.5
P14 Oyster/Pearl Gray	3	20	23	2.5	7	22	26	2.5	7	22	26	2.5
Q20 Beige	4	20	23	2.5	7	22	25	2.5	7	22	25	2.5
Q21 Beige/Pearl Gray	4	20	23	2.6	7	22	26	2.6	7	22	25	2.6
V20 Pearl Gray	3	19	22	2.4	6	21	24	2.4	6	21	24	2.4
V21 Charcoal	4	20	23	2.5	7	23	26	2.5	7	23	26	2.5
V22 Charcoal/Gray	4	20	23	2.4	7	23	26	2.4	7	22	26	2.5
V24 Charcoal/Chestnut	4	20	23	2.5	7	23	26	2.5	8	23	26	2.5
V32 Charcoal/Alpaca	4	20	23	2.5	7	21	24	2.5	7	21	24	2.6

SOLAR HEAT CONTROL PROPERTIES SHEERWEAVE STYLE 2410 PERFORMANCE +												
	High Performance Glass				Low-E Glass				6mm Double Clear Glass			
	Light Trans	g-Value/SHGC	SC	U-value in W/m2K	Light Trans	g-Value/SHGC	SC	U-value in W/m2K	Light Trans	g-Value/SHGC	SC	U-value in W/m2K
Glazing Performance	69	39	45	1.1	74	70	80	1.4	79	74	85	2.8
P12 Oyster	3	15	17	0.8	4	29	33	1.0	4	24	27	1.6
P13 Oyster/Beige	4	15	17	0.8	4	29	34	1.0	5	24	26	1.6
P14 Oyster/Pearl Gray	3	15	17	0.8	3	29	33	1.0	4	24	27	1.6
Q20 Beige	4	15	17	0.8	4	30	34	1.0	5	24	28	1.6
Q21 Beige/Pearl Gray	4	14	17	0.8	4	30	35	1.0	5	24	28	1.6
V20 Pearl Gray	3	14	16	0.8	3	28	32	0.9	3	23	26	1.5
V21 Charcoal	3	15	18	0.8	3	30	34	1.0	4	25	28	1.6
V22 Charcoal/Gray	3	15	17	0.8	3	29	34	1.0	4	24	28	1.6
V24 Charcoal/Chestnut	3	15	17	0.8	3	30	34	1.0	4	24	28	1.6
V32 Charcoal/Alpaca	3	15	17	0.8	3	24	27	1.0	4	23	27	1.6
	6mm Single Bronze Glass				6mm Single Clear Glass				3mm Single Clear Glass			
	Light Trans	g-Value/SHGC	SC	U-value in W/m2K	Light Trans	g-Value/SHGC	SC	U-value in W/m2K	Light Trans	g-Value/SHGC	SC	U-value in W/m2K
Glazing Performance	49	58	67	5.7	88	84	96	5.7	90	87	100	5.8
P12 Oyster	2	19	22	2.4	4	21	23	2.4	4	20	24	2.4
P13 Oyster/Beige	2	19	22	2.4	5	21	24	2.4	5	21	24	2.4
P14 Oyster/Pearl Gray	2	19	22	2.4	4	20	24	2.4	4	20	23	2.4
Q20 Beige	2	19	22	2.5	5	21	24	2.5	5	21	24	2.5
Q21 Beige/Pearl Gray	3	20	23	2.5	5	22	25	2.5	5	22	25	2.5
V20 Pearl Gray	2	18	21	2.4	4	20	23	2.4	4	19	22	2.4
V21 Charcoal	2	19	22	2.4	4	21	25	2.4	4	21	25	2.5
V22 Charcoal/Gray	2	19	22	2.4	4	21	24	2.4	4	21	24	2.4
V24 Charcoal/Chestnut	2	19	22	2.4	4	21	25	2.4	4	21	24	2.4
V32 Charcoal/Alpaca	2	19	22	2.4	4	21	25	2.4	4	21	24	2.4

Specifications

Fire Classification: California U.S. Title 19 (small scale), ASTM E 84 (Class 1), NFPA 701-2004 TM#1 (small scale), NFPA 101 (Class A Rating), UBC (Class I), BS 5867 2008 Part 2 Type B Performance, NFPA 701 TM#2 Large Scale and CAN/ULC-S109 (large and small scale)

Bacteria and Fungal Resistance: ASTM E 2180, ASTM G22, AATCC30 Part 3, ASTM G21, ASTM D 3273, GREENGUARD Mold and Bacteria Standard ASTM 6329; includes Microban antimicrobial additives

Environmental Certification: GREENGUARD Certified and GREENGUARD for Children and Schools Certified

Lead Free: RoHS/Directive 2002/95/EC, US Consumer Product Safety Commission Section 101, ANSI/WCMA A100.1-2007 for lead content and REACH (EC 1907/2006) compliant

Standard Uses: Roll-up shades, Roman shades, vertical blinds, panel tracks and screens

Warranty: 5-year interior

TrackLess™: TrackLess Technology minimizes the fiberglass yarns inherent tendencies to track when being rolled up in a shade.

With TrackLess Technology these same fabrics now track less, roll up straighter and reduce shade fabrication time.

Handling and Cleaning Instructions: The metalized coating is fragile and must be handled with care to avoid damage. Do not scrub.

Do not use tape, solvents or abrasive cleaners which could damage the fabric coating. Clean with a damp soft cloth using a mild detergent. Rinse with clean water and allow blind to dry in the down position. Do not slide metalized side across surfaces or into the

cardboard tube without protective plastic wrapping. Do not use Radio Frequency sealing equipment on metalized fabric. Use only heat bars or ultrasonic sealing equipment for welding.



Style 2390

Standard Width: 63" and 96" (160.0 cm and 243.8 cm)

Standard Roll Length: 30 Linear Yards (27.4m)

Composition: 34% Fiberglass, 64% Vinyl on Fiberglass and 2% Aluminum Coating

Mesh Weight: 11.8 oz/yd² (379 g/m²)

Fabric Thickness: .018 in (0.46mm)

Openness Factor: Approximately 5%

Style 2410

Standard Width: 63" and 96" (160.0 cm and 243.8 cm)

Standard Roll Length: 30 Linear Yards (27.4m)

Composition: 34% Fiberglass, 64% Vinyl on Fiberglass and 2% Aluminum Coating

Mesh Weight: 14.1 oz/yd² (478 g/m²)

Fabric Thickness: .019 in (0.48mm)

Openness Factor: Approximately 3%

Definitions

Light Transmittance: Includes light that comes through the openings and light that is reflected inward off the yarn.

Light Reflection: Represents light that is returned to the outside by the fabric.

Solar Transmittance: The total solar energy that passes through the fabric.

Solar Reflection Out: Represents the percent of all wave lengths of electromagnetic energy that are reflected out.

g-Value/SHGC: European equivalent for Solar Heat Gain Coefficient (SHGC). A rating that expresses the percentage of incident solar heat transmitted through a fenestration system. The solar heat gain coefficient is replacing the shading coefficient as the standard indicator of a window's shading ability. The lower the solar heat gain coefficient number, the less solar heat it transmits and the greater its shading ability.

UV Transmittance: Percent of Ultra Violet light transmitted through the fabric.

Color Rendering Index: A measurement of the fabrics effect on color on a scale of 1 to 100 where 100 represents no color distortion.

U-Value in W/m²K: Represents heat transmission in watts per square meter. This value does not represent US U-Values.

SC (Shading Coefficient): Percentage of solar heat gain transmitted to the interior through the glass and shading system.

References

- 1 European standard EN 410: 1998 (E), Glass in building - Determination of luminous and solar characteristics of glazing, European Committee for Standardization, April 1998.
- 2 European standard EN 12898:2001 (E), Glass in building - Determination of the emissivity, European Committee for Standardization, January 2001.
- 3 ISO 15099:2003 (E), Thermal performance of windows, doors and shading devices - Detailed calculations.
- 4 European standard EN 673:1997 (E), Glass in building - Determination of thermal transmittance (U-value) - Calculation method, European Committee for Standardization, October, 1997.

Tested by TÜV Rheinland® Quality / TNO Quality.



P. O. BOX 1700 • TUSCALOOSA, ALABAMA 35403-1700 U.S.A.
PHONE: 205/345-2120 • TOLL FREE 1/800-221-5497
FAX: 205/391-0799 • www.phifer.com

® SheerWeave is a registered trademark of PHIFER INCORPORATED.
™ TrackLess is a trademark of PHIFER INCORPORATED.
® GREENGUARD is a registered trademark of GREENGUARD Environmental Institute.
® MICROBAN is a registered trademark of Microban Products Company.
© PHIFER INCORPORATED V11